



## Zongfab Modular Building Co.,Ltd

Address: National Highway 309, Zhuliu Street, Changle County, Weifang City, Shandong Province

Factory Address: Zhuliu Industrial Park, Changle County, Weifang City, Shandong Province



Cel: 86 15954469215 WhatsApp: 86 15954469215 .  
Email: kevin@zongfab.com /zxj508707848@aliyun.com/  
Website: zongfabmodular.com





---

## Company profile

Weifang Zongfab Modular Building Co.,Ltd is located in Weifang, Shandong Province. Founded in 2018, the company has a factory area of 46000 square meters and more than 200 employees. It has a professional technical research and development team, a senior designer team, a production team, a quality inspection team, a construction team, and a sales team. The company is committed to the production and operation of a variety of space homestays, container houses, camping mobile houses, and Apple cabins. It is an integrated housing production enterprise integrating design, production, manufacturing, sales, construction and installation. It is specialized in providing residential accommodation scheme planning for commercial scenic spots, hotels, commercial squares, parks, farmhouses, and other commercial areas, and providing sales services for supporting equipment such as residential accommodation for construction sites; At the same time, we can customize creative sunshine houses, mobile villas and landscape homestays. The integrated housing has a complete range of products, which can meet the needs of customers for various types of high-end mobile housing. The company has advanced and complete production equipment, source factories, high-quality products, wholesale prices, and can accept foreign trade orders. We sincerely welcome customers at home and abroad to visit and guide us to create a better future.

# Content

## Products System

- [System A- Assembly House](#)
- [System B- Flat Pack House](#)
- [System C- Z Folding House](#)
- [System D- X Folding House](#)
- [System E- Expandable House](#)
- 
- [System F- Apple Cabin](#)
- [System G- Space Capsule](#)
- [System H- Shipping Container House](#)

-[System I- Sandwich Panel Houe](#)

-[System J- Portable Toilet](#)

## Our Case and Advantages

- [Our Teams](#)

- [Certificates](#)

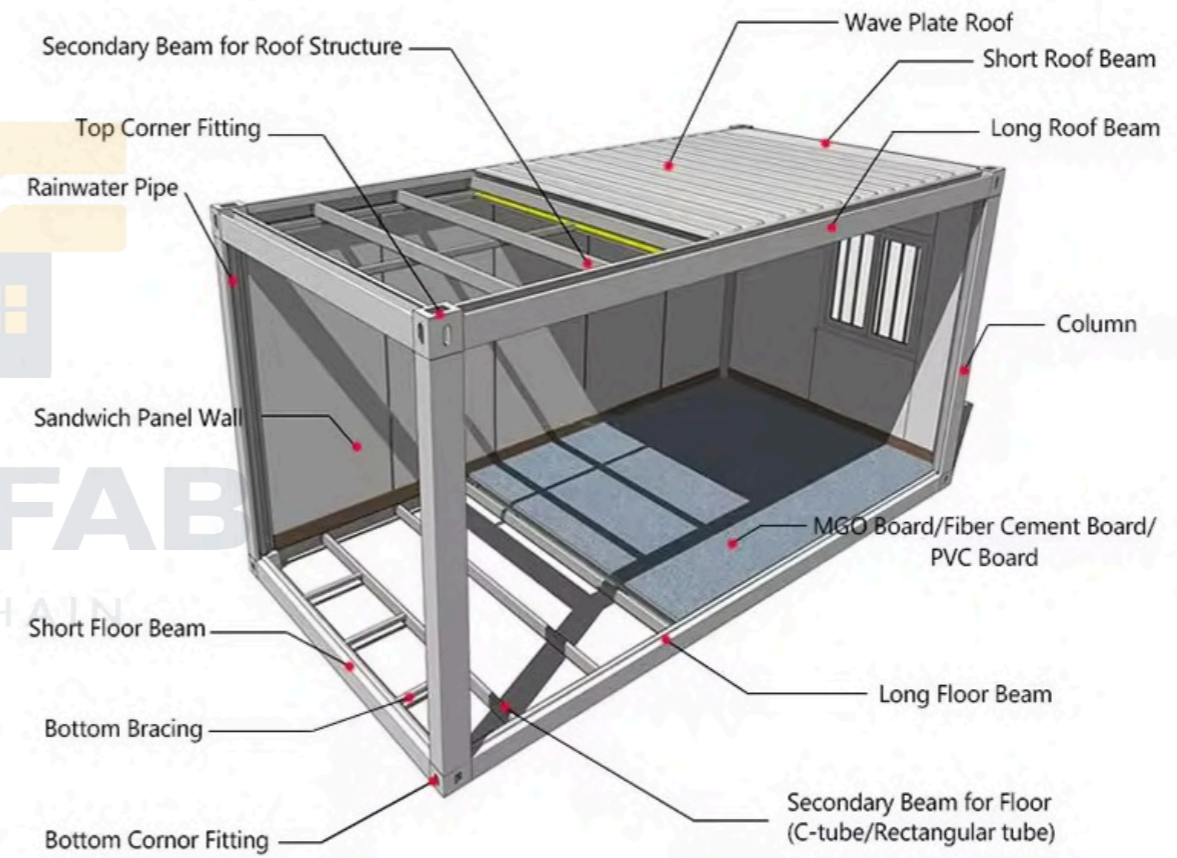


ZONGFA  
SUPPLY CHAIN



# A- Assembly House

2990mm\*5990mm\*2800mm  
Completely Knocked Down  
Low Shipping Cost



Build your Dream homes

kevin@zongfab.com

whatsapp 86 15954469215

Build your Dream homes

zxj508707848@aliyun.com

# B-Flat Pack House



2435mm\*5900mm\*2620mm  
 Semi-knocked-down  
 Easy and fast installation  
 More durable



- 1. Top Frame
- 2. Bottom Frame
- 3. L shape Pillar
- 4. Top steel plate
- 5. Floor
- 6. PVC pipe for water drainage
- 7. Steel Security Door
- 8. Plastic Steel Sliding Barred Windows
- 9. Sandwich wall panel



Build your Dream homes

kevin@zongfab.com

Build your Dream homes

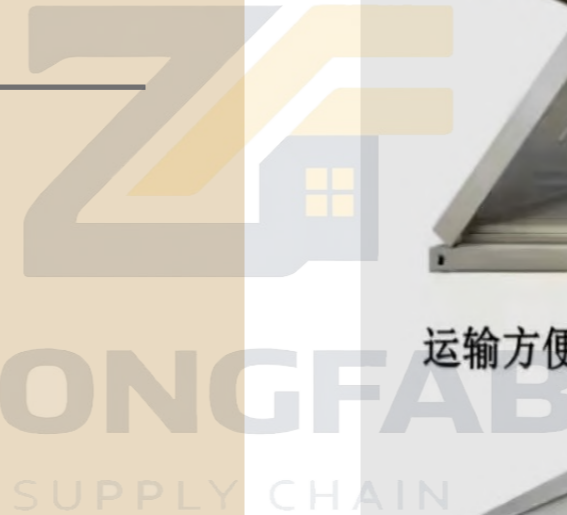
whatsapp 86 15954469215

zxj508707848@al iyun.com

# C-Z Folding House



2435mm\*5900mm\*2620mm  
Almost completed  
Extremely fast construction  
Foldable



## Z型折叠打包箱



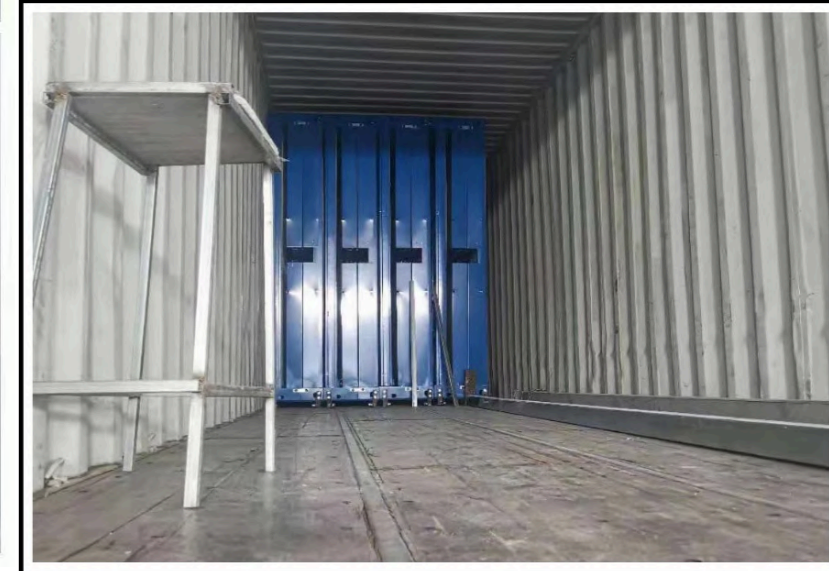
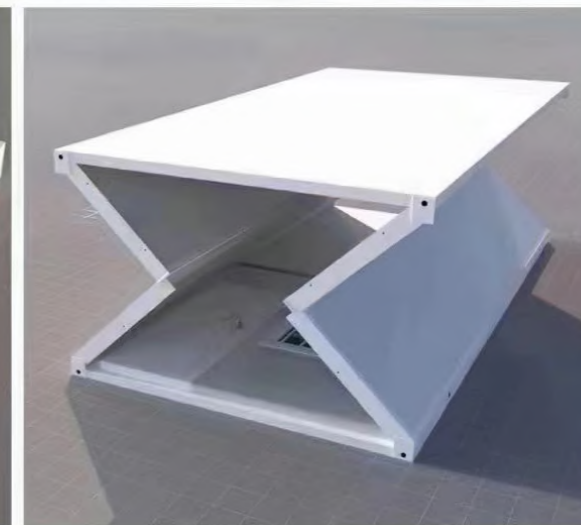
运输方便 安装方便快捷 周转方便，损耗低



# D-X Folding House



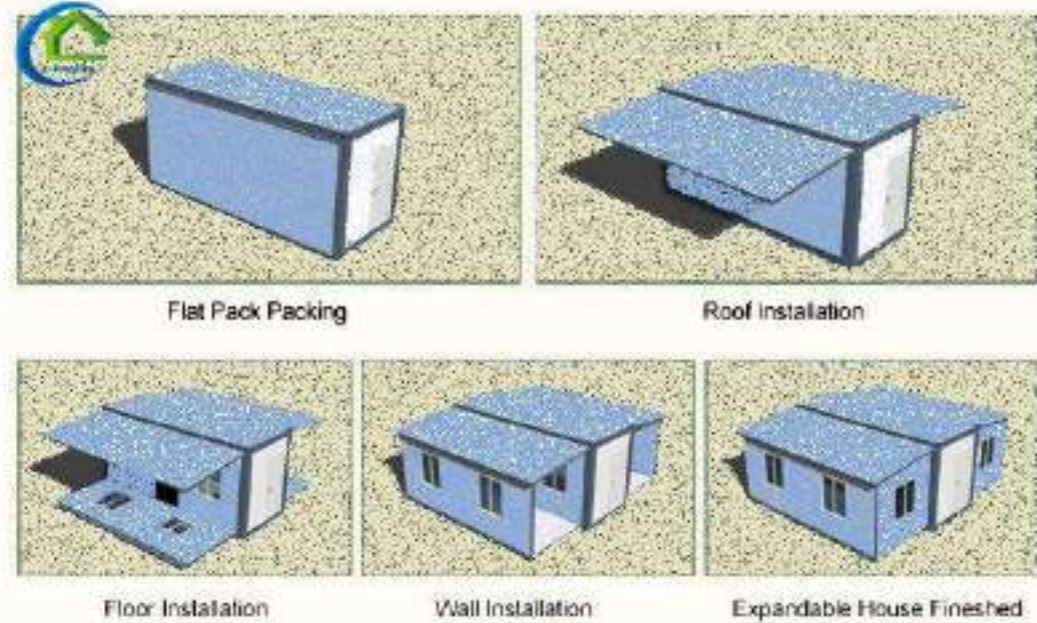
2435mm\*5900mm\*2620mm  
Almost completed  
Extremely fast construction  
Foldable



# Design Layout and Casement



# E-Expandable House



## Use for

1. Fashionable Villas ,Affordable Home
2. Vacation House,Private Studio,Personal workroom
3. Restrooms Commercial Use: Small Art Exhibition Hall, Youth Hostel, Trendy Bar, Fashionable Café





— DIFFERENT LAYOUT —



One Living room  
One Bedroom  
One Restroom



One Living room  
One Bedroom room  
One Restroom



One Living room  
Two Bedrooms  
One Restroom



One Living room  
Two Bedroom  
One Restroom



One Living room  
Three Bedrooms  
One Restroom



One Living room  
Three Bedrooms  
One Restroom



# G-Capsule House

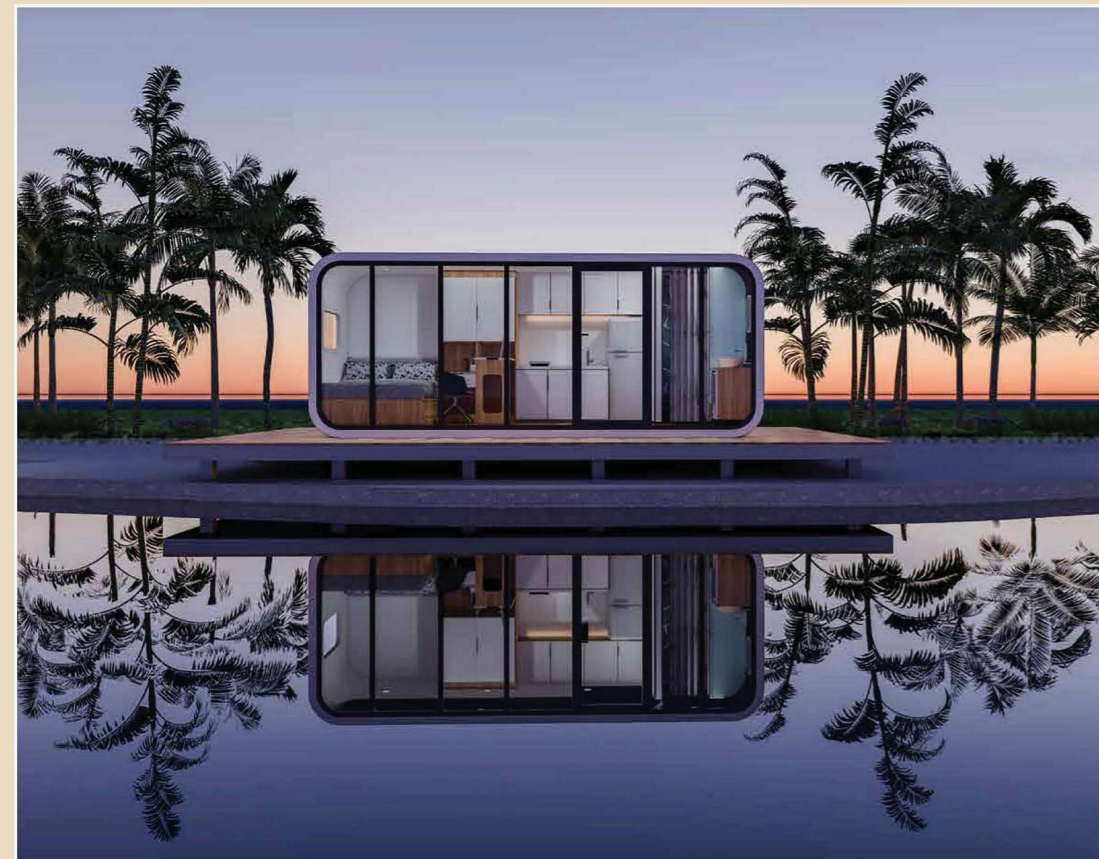
Size: W5-3000mm\*3000\*8500mm    W7-3000mm\*3000mm\*11500mm



Capsule House is a small, compact housing design suitable for densely populated urban areas. They are small in size but fully functional, typically including sleeping areas, storage space, and bathrooms. Some designs are portable, allowing for easy relocation as needed. Capsule Houses also prioritize energy efficiency and environmental sustainability, often incorporating renewable energy sources and innovative design elements.



# F-Apple Cabin



Build your Dream homes

kevin@zongfab.com

Apple Cabin is a cozy getaway nestled in nature, offering a peaceful escape from city life. Despite their small size, they provide all the essentials for a comfortable stay. Guests can relax, enjoy outdoor activities, and appreciate the scenic surroundings. Some cabins are eco-friendly, using sustainable materials and energy-saving features. Overall, Apple Cabin is an ideal retreat to unwind and reconnect with nature.

whatsapp 86 15954469215



zxj508707848@aliyun.com

# I-Sandwich Panel building

## Thermal insulation

Excellent performance of energy saving, emission reduction, thermal insulation effect, and the house is warm in winter and cool in summer.

## Fire retardant

The module's fire rating is A1, with better safety performance.

## Strong seismic resistance

Strong seismic resistance with firm structure, suitable for areas with seismic requirements below Grade 8 and below.

## Simple construction

Simple and easy construction, flexible operation, lower labor intensity, like block-building.

## Durable

Anti-aging, non-corrosion, improve the strength of the whole house and prolong the service life of the house.



## Temporary Kiosk Security Cabin



## Nucleic Acid Testing Cabin



## Mobile Toilet



# Case presentation

## Affordable/Public Housing construction

Modular Housing Is Changing the Game for Affordable Housing.

A prefab house would be faster to build compared with similar structures built traditionally.

You might think that custom-made parts put together off-site would be more expensive, and you're probably right. But that's for

one-off projects. But with modular construction, that's really not the case: mass producing these parts would be cheaper since prefab manufacturers can get bulk order discounts from suppliers, and that savings gets passed down to the homeowners.

Prefab greatly lowers the overall costs of building homes without sacrificing the quality of the materials. This also helps you avoid unreliable contractors and staff, saving you a lot of headache and repair dollars in the future. Factor in the relatively short "construction" time and you'll see great savings on the overall build cost.



We create comfortable, welcoming living quarters for any number of people. Our prefabricated temporary buildings offer a quick, efficient, and cost-effective way to increase your space for a temporary or permanent period. We can assure the high quality of our products as Econel-UPS is accredited to ISO 9001 and ISO 14001 certificates.

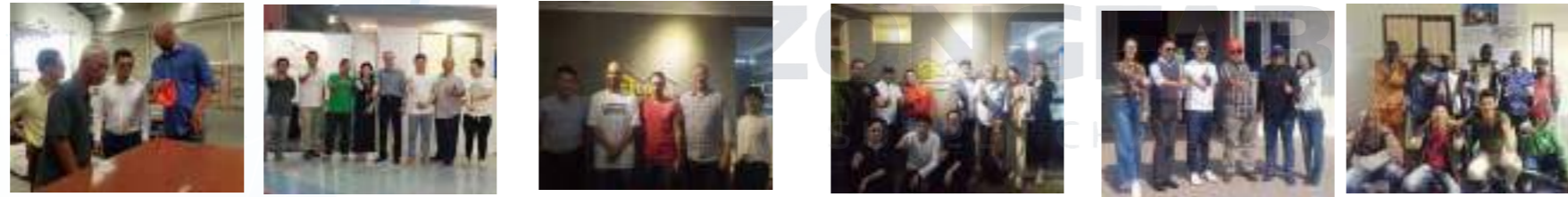


# Global Strategy Partner Collection

Lead



Mutual creation  
Mutual benefit



The future  
is promising

*We look forward to cooperating with you for common development and win-win benefit.*