

公司简介

Product Introduction



产品介绍

Product Introduction



标准砖纹

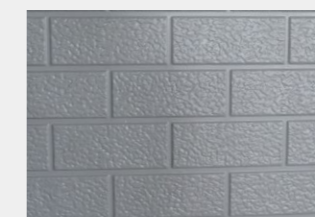
Standard Brick Pattern

板材表面重现传统砖墙效果，经典砖纹规则统一。
适合水平安装。

The surface of the panel reproduce the traditional brick wall effect.
The classic brick pattern is unified, suitable for horizontal installation.



标砖天使白(BZ-101)
Standard brick pattern angelic white



标砖浅灰 (BZ-202)
Standard brick pattern light grey



标砖象牙白 (BZ-102)
Standard brick pattern ivory white



标砖浅棕砂 (BZ-302)
Standard brick pattern light brown sand



标砖古墙灰(BZ-201)
Standard brick pattern dark grey



标砖米黄(BZ-504)
Standard brick pattern cream-colored

粗砖纹

Thick Brick Pattern

肌理沉稳大气，又带有古典纯朴的风格，板面立体感强、层次鲜明。适合水平安装。

Composed air and classical simple style, with strong three-dimensional sense and distinct level effect. Suitable for horizontal installation.



粗砖天使白 (CZ-101)
Thick brick pattern angelic white



粗砖微紫黄 (CZ-501)
Thick brick pattern slightly purplish yellow



粗砖米黄 (CZ-504)
Thick brick pattern cream-colored



粗砖浅棕砂 (CZ-302)
Thick brick pattern light brown sand



粗砖古墙灰 (CZ-201)
Thick brick pattern dark grey

细砖纹

Thin Brick Pattern

灵活多变的纹路组合，呈现斑斓的视觉效果，韵味独特。适合水平安装，

Flexible line combination, present bright-coloured visual effect, with special touch and rich significance.



细砖微紫黄 (XZ-501)
Thin brick pattern slightly purplish yellow



细砖沙漠黄 (XZ-502)
Thin brick pattern desert yellow



细砖古墙灰 (XZ-201)
Thin brick pattern dark grey

弹涂纹

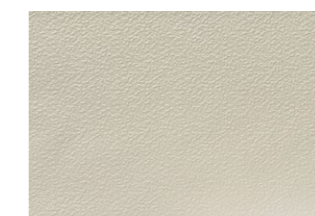
Catapult Shading

灵活多变的纹路，呈现出具有设计感的凹凸效果，韵味独特。

Flexible line presents the special sense of design of the concave convex effect.



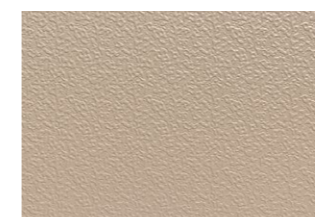
弹涂纹天使白 (TP-101)
Catapult shading angelic white



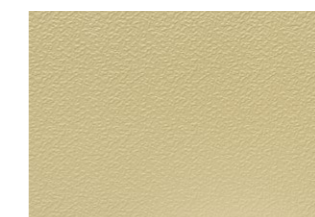
弹涂纹象牙白 (TP-102)
Catapult shading ivory white



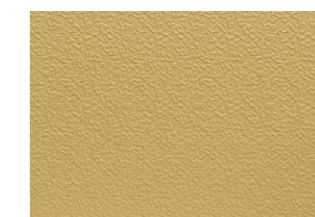
弹涂纹浅灰 (TP-202)
Catapult shading light grey



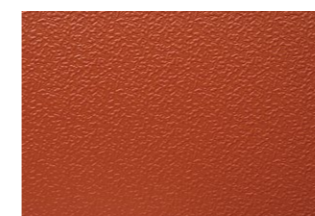
弹涂纹微紫黄 (TP-501)
Catapult shading slightly purplish yellow



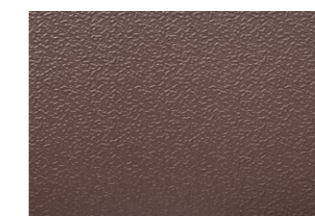
弹涂纹米黄 (TP-504)
Catapult shading cream-colored



弹涂纹沙漠黄 (TP-502)
Catapult shading desert yellow



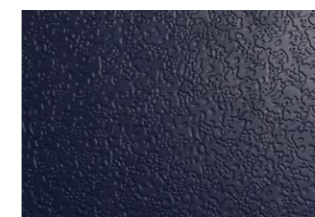
弹涂纹橙色 (TP-507)
Catapult shading orange



弹涂纹浅棕砂 (TP-302)
Catapult shading light brown



弹涂纹古墙灰 (TP-201)
Catapult shading dark grey



弹涂纹警蓝 (TP-701)
Catapult shading police blue

叠石纹

Stacked Stone

模仿叠石的效果，纹路走向灵动多变，装饰效果温馨和谐。适合水平安装。

Imitate the effect of stacked stone to make the lines more flexible, with warm and harmonious decoration effect. Suitable horizontal installation.



叠石纹微紫黄 (DS-501)
Stacked stone slightly purplish yellow



叠石纹天使白 (DS-101)
Stacked stone angelic white



叠石纹古墙灰 (DS-201)
Stacked stone dark grey



短叠石-砖红 (DS-308)
Stacked stone brick red

木纹

Wood Grain

肌理沉稳大气，又带有古典纯朴的风格，板面立体感强、层次鲜明。适合水平安装。

Composed air and classical simple style, with strong three-dimensional sense and distinct level effect. Suitable for horizontal installation.



木纹天使白 (M-101)
Wood grain angelic white



木纹浅灰 (M-202)
Wood grain light grey



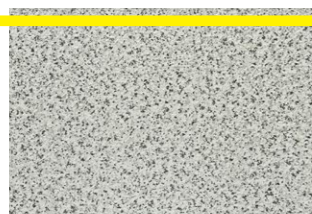
木纹古墙灰 (M-201)
Wood grain dark grey

文化石纹

Culture Stone

肌理沉稳大气，又带有古典纯朴的风格，板面立体感强、层次鲜明。适合水平安装。

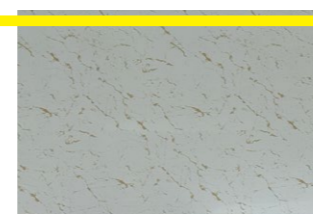
Composed air and classical simple style, with strong three-dimensional sense and distinct level effect. Suitable for horizontal installation.



平板白色大理石 (P-808)
Flat white marble



平板红色大理石 (P-802)
Flat red marble



平板和田玉 (P-901)
Flat hotan jade

复涂系列

Double Coating

板材表面重现传统砖墙效果，经典砖纹规则统一。适合水平安装，

The surface of the panel reproduce the traditional brick wall effect. The classic brick pattern is unified, suitable for horizontal installation.



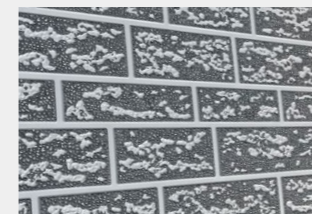
标砖天使白辊古墙灰 (BZ-101-201)
Standard brick pattern angelic white dark grey



标砖天使白辊深红 (BZ-101-403)
Standard brick pattern angelic deep red



标砖古墙灰辊深红 (BZ-201-403)
Standard brick pattern dark grey deep red



粗砖浅灰辊古墙灰 (CZ-202-201)
Thick brick pattern light grey dark grey



粗砖微紫黄辊杏黄 (CZ-502-506)
Thick brick pattern slightly purplish yellow desert yellow



粗砖微紫黄辊橙色 (CZ-501-507)
Thick brick pattern slightly purplish yellow orange



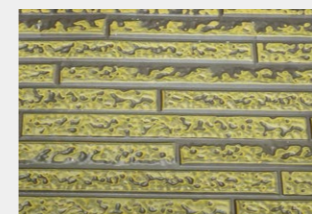
细砖古墙灰辊天使白 (XZ-201-101)
Thin brick pattern dark grey angelic white



细砖天使白辊古墙灰 (XZ-101-201)
Thin brick pattern angelic white dark grey



细砖天使白辊砖红 (XZ-101-402)
Thin brick pattern angelic white brick red



长条石浅棕辊砖红 (CTS-302-402)
Long stripe light brown brick red

平板系列

Flat Panel

板材表面重现传统砖墙效果，经典砖纹规则统一。

适合水平安装，

The surface of the panel reproduce the traditional brick wall effect. The classic brick pattern is unified, suitable for horizontal installation.



平板天使白 (P-101)
Flat panel angelic white



平板象牙白 (P-102)
Flat panel ivory white



平板微紫黄 (P-501)
Flat panel slightly purplish yellow



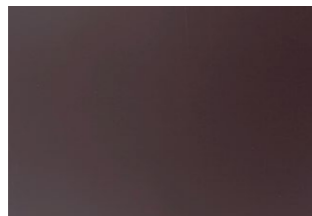
平板浅灰 (P-202)
Flat panel light grey



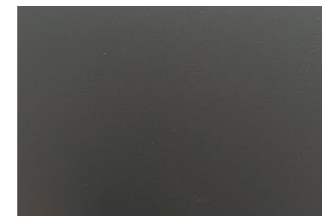
平板米黄 (P-504)
Flat panel cream-colored



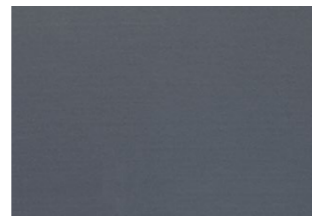
平板大山木 (2)
Flat panel dashanmu



平板浅棕砂 (P-302)
Flat panel light brown



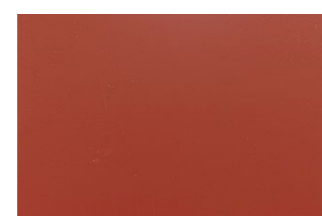
平板深灰 (P-202)
Flat panel deep grey



平板古墙灰 (P-201)
Flat panel dark grey



平板松木节 (P-0501)
Flat panel pine



平板橙色 (P-507)
Flat panel orange

小条纹

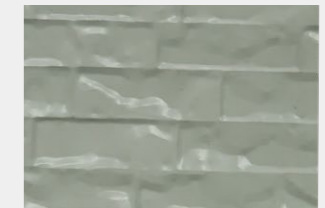
Small Strips

简约的纹路组合，呈现简洁时尚的视觉效果，韵味独特。适合水平安装。

Simple line combination, presenting Concise fashion visual effects, with special touch and rich significance. Suitable for horizontal installation.



小条纹天使白 (XT-101)
Small strips angelic white



小砖纹天使白 (XZ-101)
Small brick pattern angelic white



小砖纹沙漠黄 (XZ-502)
Small brick pattern desert yellow

小砖纹

Small Brick Pattern

灵活多变的纹路组合，呈现斑斓的视觉效果，韵味独特。适合水平安装，

Flexible line combination, presenting bright-coloured visual effect, with special touch and rich significance.

长条石

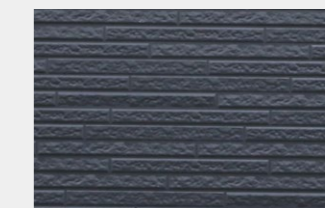
Long Strip Stone

肌理沉稳大气，又带有古典纯朴的风格，板面立体感强、层次鲜明。适合水平安装。

Composed air and classical simple style, with strong three-dimensional sense and distinct level effect. Suitable for horizontal installation.



长条石天使白 (CTS-101)
Long strip stone angelic white



长条石古墙灰 (CTS-201)
Long strip stone dark grey



长条石浅棕砂 (CTS-302)
Long strip stone light brown

中条纹

Middle Stripes

纹路细致清晰。富于变化、版面立体感强，层次鲜明。适合水平安装，

With clear and detailed texture, full of change, strong sense of three-dimensional and distinct levels. Suitable for horizontal installation.

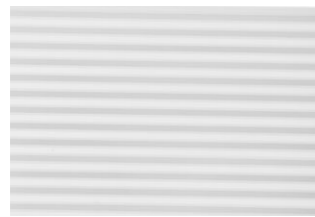


中斜沟

Middle Sloping Valley Gutter

纹路细致清晰。富于变化、版面立体感强，层次鲜明。适合水平安装，

With clear and detailed texture, full of change, strong sense of three-dimensional and distinct levels. Suitable for horizontal installation.



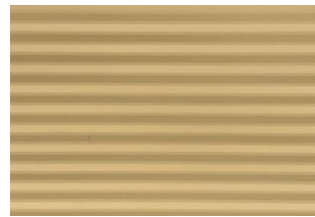
中条纹天使白 (ZT-101)
Middle stripes angelic white



中条纹象牙白 (ZT-102)
Middle stripes ivory white



中条纹米黄 (ZT-504)
Middle stripes cream-colored



中条纹沙漠黄 (ZT-502)
Middle Stripes Desert yellow



中条纹浅棕砂 (ZT-302)
Middle stripes light brown



中条纹古墙灰 (ZT-201)
Middle stripes dark grey



中条纹橙色 (ZT-507)
Middle stripes orange



中条纹绿色 (ZT-509)
Middle stripes green



平板中斜沟天使白 (PZ-101)
Flat panel middle sloping valley gutter angelic white



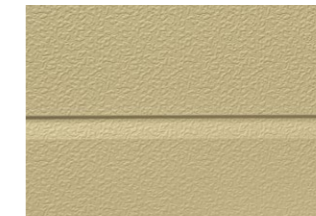
平板中斜沟象牙白 (PZ-102)
Flat panel middle sloping valley gutter ivory white



弹涂纹中斜沟微紫黄 (TZ-501)
Mud pattern middle sloping valley gutter purplish yellow



弹涂纹中斜沟浅灰 (TZ-202)
Mud pattern middle sloping valley gutter light grey



弹涂纹中斜沟米黄 (TZ-504)
Mud pattern middle sloping valley gutter cream-colored



弹涂纹中斜沟沙漠黄 (TZ-502)
Mud pattern middle sloping valley gutter desert yellow



弹涂纹中斜沟古墙灰 (TZ-201)
Mud pattern middle sloping valley gutter dark grey



中斜沟古墙灰 (PZ-201)
Middle sloping valley gutter dark grey



木纹中斜沟黑鸡翅、胡桃木 (MZ-0302)
Wood grain middle sloping valley gutter Black panga-panga, walnut wood



木纹中斜沟鸡翅木 (MZ-8043)
Wood grain middle sloping valley gutter panga-panga



木纹中斜沟黄鸡翅 (MZ-0301)
Wood grain middle sloping valley gutter Yellow panga-panga

马赛克纹

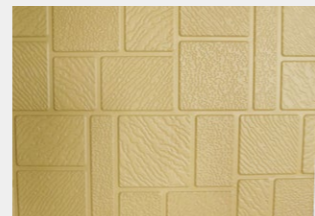
Mosaic

凹凸立体感强，充满现代感，斑斓的纹理设计，使板材细节更加丰满。适合水平安装。

With strong three-dimensional sense, full of modern sense, present bright-coloured visual lines design, which make the details more well-developed.



马赛克浅棕砂 (MSK-302)
Mosaic light brown



马赛克沙漠黄 (MSK-502)
Mosaic desert yellow

中直沟

Middle Straight Valley Gutter

纹路细致清晰。富于变化、版面立体感强，层次鲜明。
适合水平安装，

With clear and detailed texture, full of change, strong sense of three-dimensional and distinct levels. Suitable for horizontal installation.



弹涂纹中沟象牙白 (TZ90-102)
Mud pattern middle gutter ivory white



木纹中沟米黄 (MZ90-504)
Wood grain middle sloping valley gutter cream-colored



平板中沟古墙灰 (PZ90-201)
Mud pattern middle gutter dark grey



木纹中沟黄鸡翅 (MZ90-0301)
Wood grain middle sloping valley gutter panga-panga



木纹中沟黑鸡翅、胡桃木 (MZ90-0302)
Wood grain middle sloping valley gutter Black panga-panga, walnut wood



弹涂纹中沟黄鸡翅 (TZ90-0301)
Mud pattern middle gutter yellow panga-panga

中纹

Middle Strips

纹路细致清晰。富于变化、版面立体感强，层次鲜明。
适合水平安装，

With clear and detailed texture, full of change, strong sense of three-dimensional and distinct levels. Suitable for horizontal installation.



中纹天使白 (Z-101)
Middle strips angelic white



中纹橘色 (Z-507)
Middle strips orange

